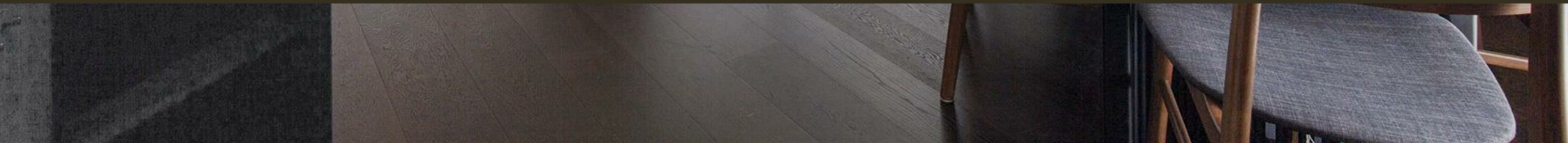




Moore House, 2 Gatliff Road  
London SW1W

GARTON JONES.COM



# Moore House, 2 Gatliff Road London, SW1W

## £1,438 Per Week

A THREE BEDROOM apartment to rent of approx. 1298 sq.ft (120.60 sq.m) in Moore House, Grosvenor Waterside. This FURNISHED/UNFURNISHED apartment benefits from an open plan reception room, with access to an enclosed BALCONY, a modern kitchen with Miele integrated appliances including a wine cooler, wood flooring, air conditioning, en-suite bathroom plus a separate shower room and good storage. There is SECURE UNDERGROUND PARKING. Residents will have the use of a 24 hour concierge service, a leisure suite with a well-equipped gym and spa facilities. There is an on-site Sainsbury's Local, a coffee shop, crèche and Purple Dragon private kids club. The additional amenities including shops, restaurants and the excellent transport links of both Sloane Square and Victoria are within walking distance.

Available via Garton Jones on-site office at Grosvenor Waterside (underneath Bramah House).

Please note the furniture may differ or not be included to that shown in current photos.

Council Tax: Westminster City Council (band G). Total: £1,520.09 per annum 2023/24.

12 month minimum term. 6 week deposit required.

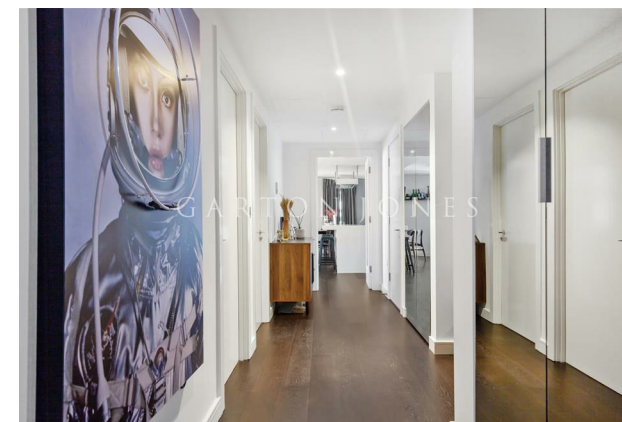
EPC rating: B

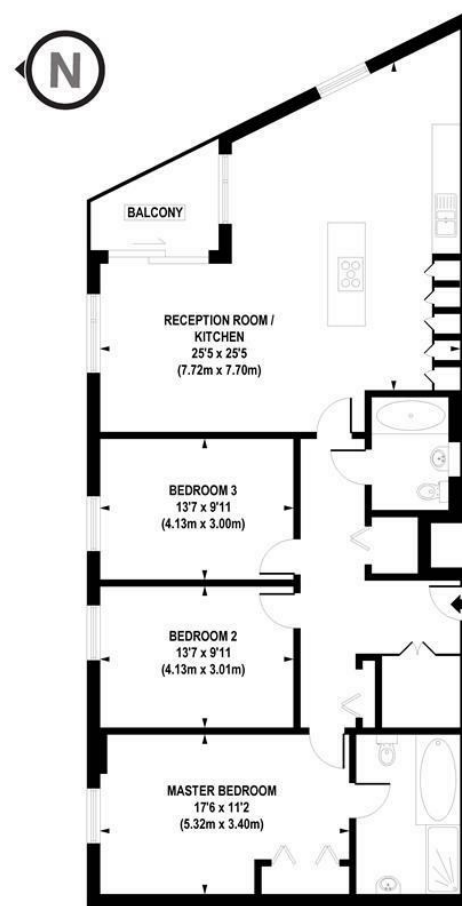
- 1328 Sq.ft (124 Sq.m)
- Three Bedrooms
- Open Plan Reception Room
- Integrated Kitchen
- 2 Bathrooms (1 En-suite)
- 24 Hour Concierge
- Secure Underground Parking
- Private Balcony
- On-Site Sainsbury's, Gym, Coffee Shop & Bakery, Purple Dragon Private Kids Club & Crèche
- Walking Distance to Sloane Square & Victoria Station

## GARTON JONES.COM

8 Gatliff Road  
Grosvenor  
Waterside  
Chelsea  
London  
SW1W 8DP

Lettings:  
+44 (0) 20 7730 5007  
gws@gartonjones.com  
www.gartonjones.com





APPROX. GROSS INTERNAL AREA FLOOR 1298 sq. ft / 120.60 sq. m

Floorplan is for illustrative purposes only and is not to scale.  
Every attempt has been made to ensure the accuracy of the floorplan shown, however all measurements, fixtures, fittings and data shown are an approximate interpretation for illustrative purposes only.  
Liability for errors, omissions or mis-statement through negligence or otherwise is hereby excluded.

**CP**CREATIVE  
PROPERTY MARKETING

